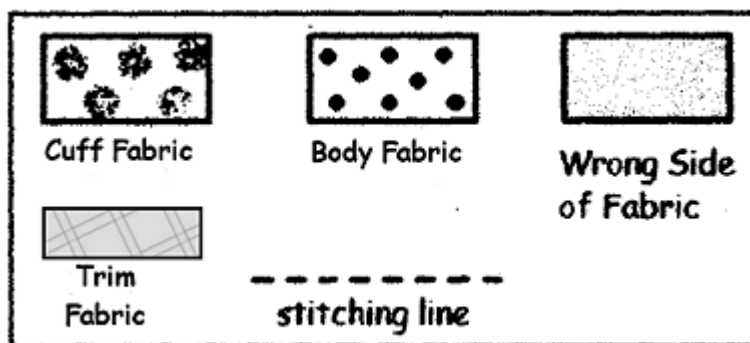


## “Hot Dog” Style Pillowcase Instructions

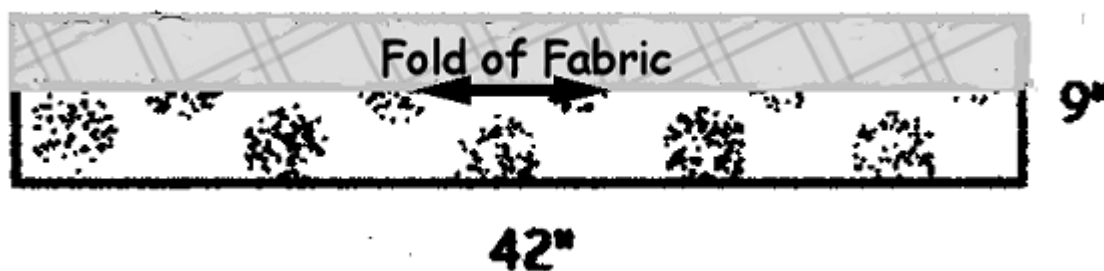


Step 1  
Fold Trim fabric lengthwise and press with **wrong** sides together.

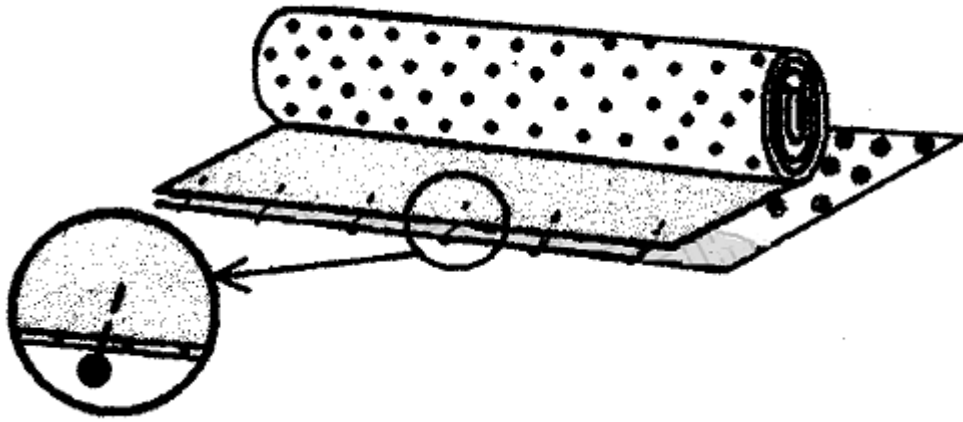
Step 2  
Lay cuff fabric on flat surface with **right** side up.



Step 3  
Place trim fabric on top of the cuff fabric with raw edges matching.

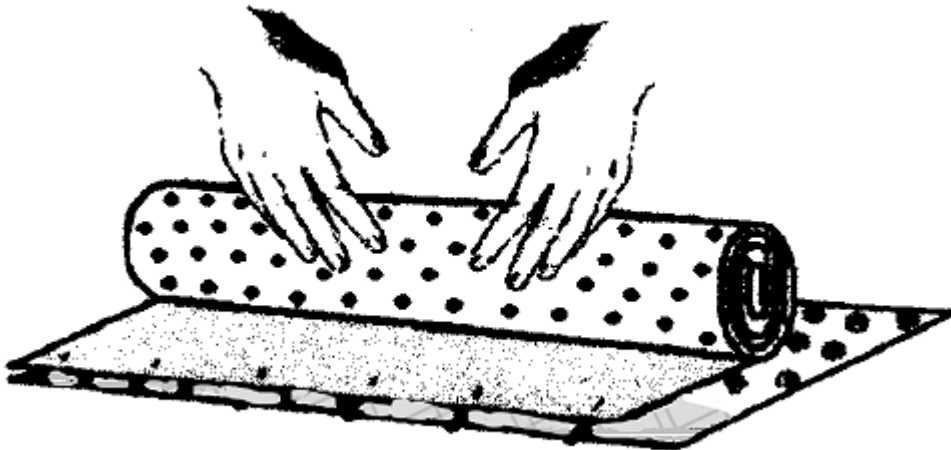


Step 3  
Lay pillowcase body fabric right side down on top of the cuff and trim fabrics matching raw edges. Pin all edges together.



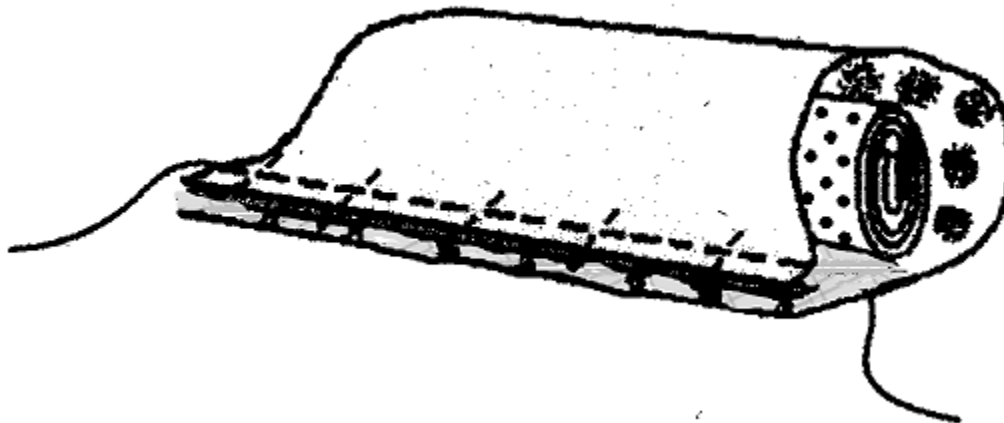
Step 4

Roll the width of the pillowcase body toward the pinned edge. Stop rolling when you reach the center of the cuff fabric.



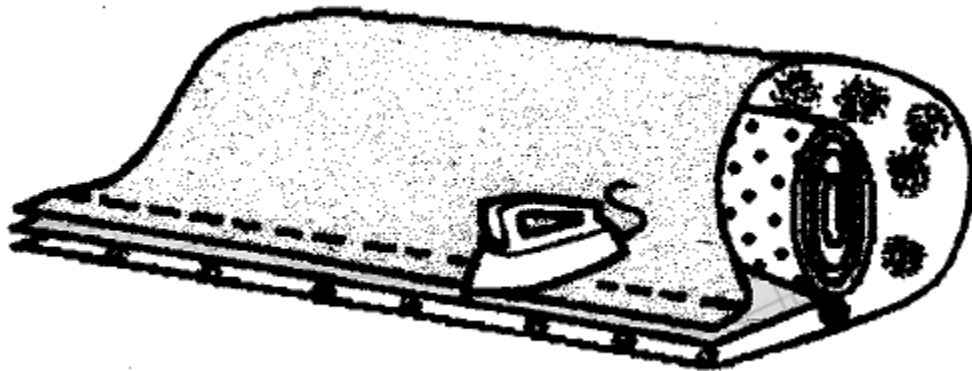
Step 5

Wrap coordinating cuff fabric around rolled pillowcase body. Match raw edges and re-pin. Sew a  $\frac{1}{2}$ " seam allowance along the pinned edge. Backstitch three or four stitches at beginning and end. Take care not to sew the pillowcase roll into the seam.



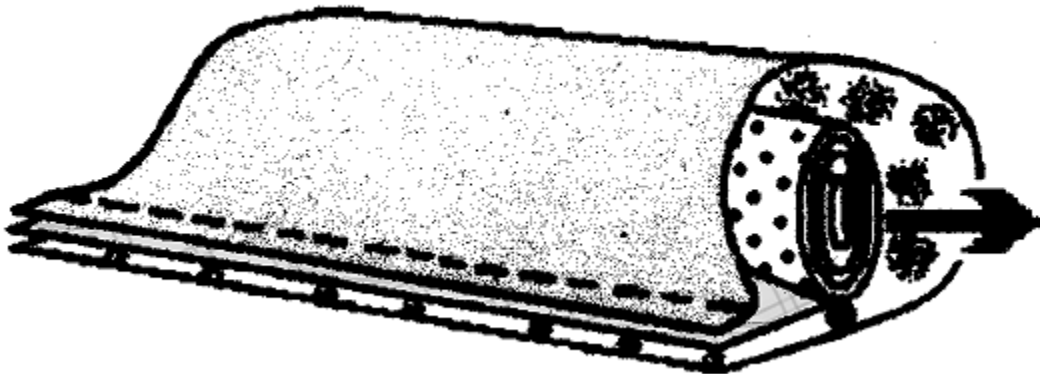
Step 6

Press along the stitching line on both sides before pressing the seam open to set the stitches.



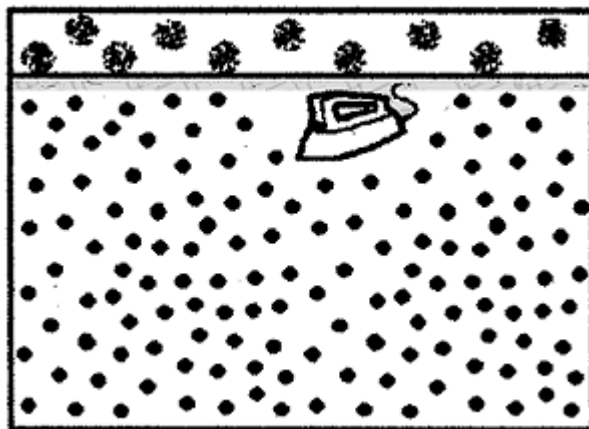
Step 7

Pull the pillowcase body out through the side opening of the tube. The pillowcase and cuff are now right side out.



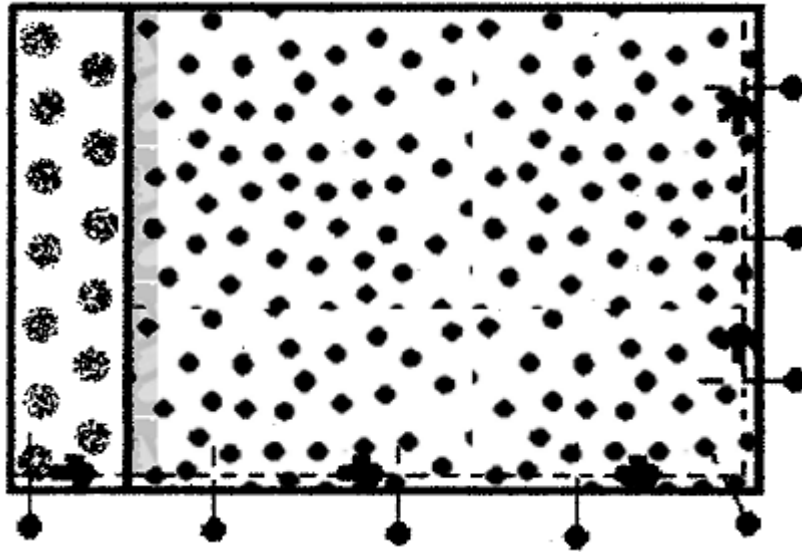
Step 8

Press seam flat on both sides until the seam lays flat.



Step 9

With **WRONG** sides together, stitch pillowcase beginning at cuff end with a  $\frac{1}{4}$ " seam. Pivot at the corner and continue across the bottom of the pillowcase. Backstitch at the ends.



Press seams flat.

Step 10

Turn pillowcase inside out and press. Sew  $\frac{1}{2}$ " seam beginning at cuff end. Pivot at the corner and continue along the bottom of the pillowcase. Be sure to backstitch at both ends. Press seams. Turn pillowcase right side out and press. You're done!

